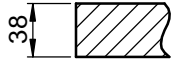
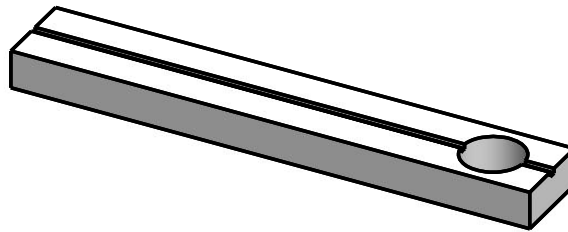
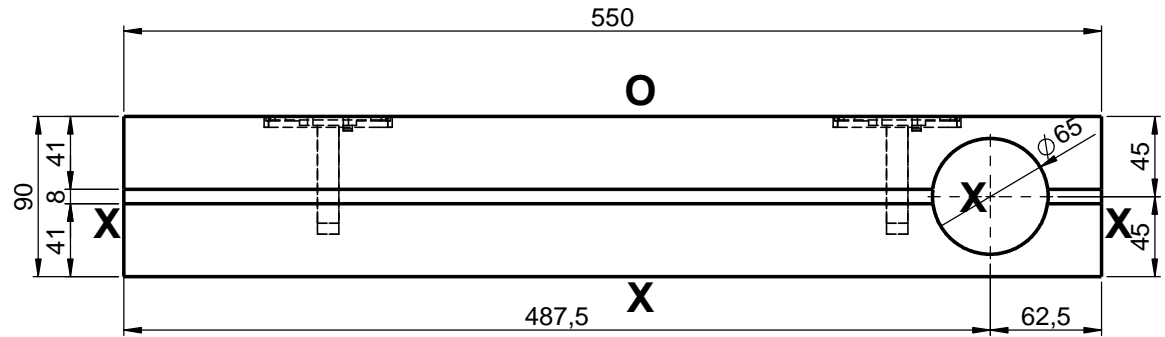
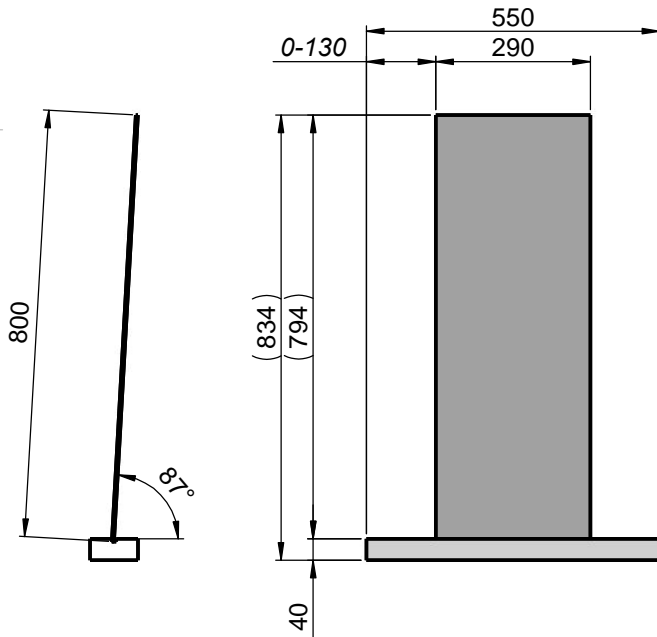
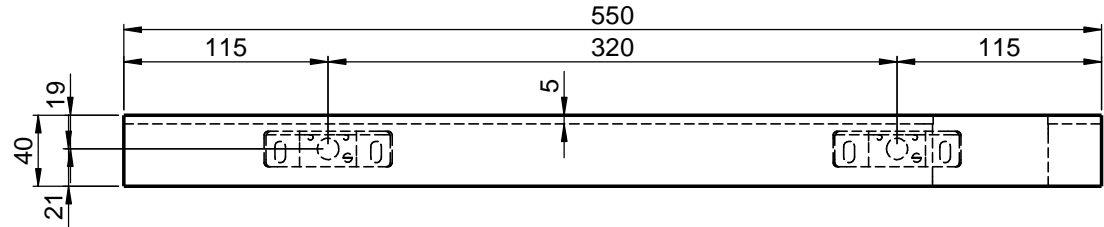
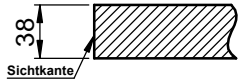


SPIE-AB
Materialstärke: 40 mm

O = Schnittkante



X = Sichtkante



WENN NICHT ANDERS DEFINIERT:
 BEMASSUNGEN SIND IN MILLIMETER
 TOLERANZEN: +/- 2mm

| | | | |
|-------------------------------|-------|-----------------------------|---------------|
| domovari | | Kunde: | Kunden-Nr.: |
| | | Bestell-Nr.: | Raum: |
| NAME Jörg Schlicker | DATUM | Kommission: | |
| FARBE: 101 uni weiß | | Auftrags-Nr.: | |
| GEWICHT: 5.50 kg | | letzte Änderung: 29.03.2021 | |
| | | | BLATT 2 VON 3 |